

Production Worksheet

Wilcom EmbroideryStudio - Designing



Design: **n°04580152866 _17-53-18_logo casaque coeur**

Title:

Stitches: 9,293
 Height: 80.3 mm
 Width: 68.2 mm
 Colors: 4
 Colorway: Gunold Poly40
 Zoom: 1:1

Machine format: Tajima
 Color changes: 5
 Stops: 6
 Trims: 7
 Appliqués: 0
 Left: 34.1 mm
 Right: 34.1 mm
 Up: 40.2 mm
 Down: 40.2 mm
 EndX: 0.0 mm
 EndY: 0.0 mm
 Area: 5479.3 mm²
 Max stitch: 6.9 mm
 Min stitch: 0.3 mm
 Max jump: 6.9 mm
 Total thread: 53.22m
 Total bobbin: 20.17m



Stop Sequence:

#	N#	Color	St.	Code	Name	Chart
1.	12		577	61080	Gunold Poly40	
2.	2		367	61005	Gunold Poly40	
3.	30		3,084	61475	Gunold Poly40	
4.	1		1,177	61001	Gunold Poly40	
5.	12		1,926	61080	Gunold Poly40	
6.	2		2,160	61005	Gunold Poly40	

Color Film

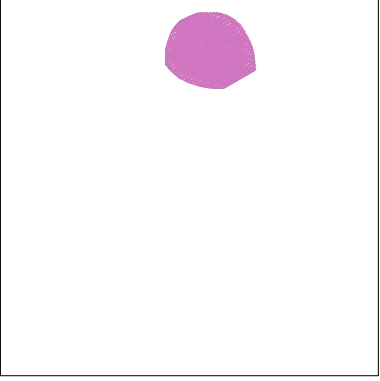
Wilcom EmbroideryStudio - Designing



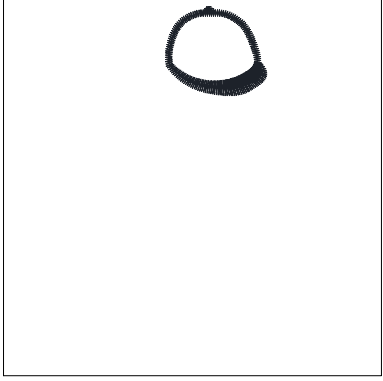
Design: **n°04580152866 _17-53-18_logo casaque coeur**

Title:

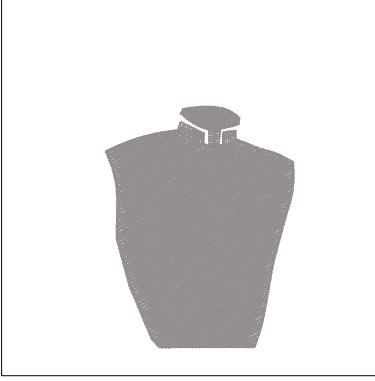
Stitches: 9,293
Height: 80.3 mm
Width: 68.2 mm
Colors: 4
Colorway: Gunold Poly40
Zoom: 0.59



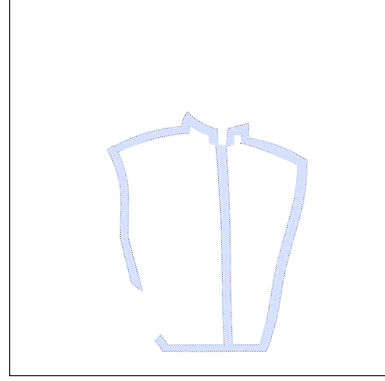
Stop #: 1
Element:
Code: 61080
Name:
Chart: Gunold Poly40
Stitches: 577
Thread used: 3.47m



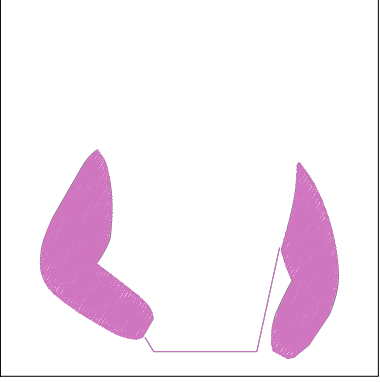
Stop #: 2
Element:
Code: 61005
Name:
Chart: Gunold Poly40
Stitches: 367
Thread used: 1.82m



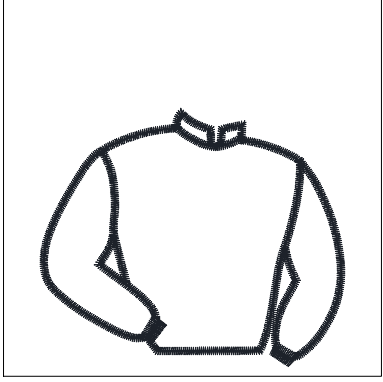
Stop #: 3
Element:
Code: 61475
Name:
Chart: Gunold Poly40
Stitches: 3,084
Thread used: 20.30m



Stop #: 4
Element:
Code: 61001
Name:
Chart: Gunold Poly40
Stitches: 1,177
Thread used: 5.74m



Stop #: 5
Element:
Code: 61080
Name:
Chart: Gunold Poly40
Stitches: 1,926
Thread used: 11.65m



Stop #: 6
Element:
Code: 61005
Name:
Chart: Gunold Poly40
Stitches: 2,160
Thread used: 9.65m