

Production Worksheet

Wilcom EmbroideryStudio – Designing



Stitches: 10,688
 Height: 69.2 mm
 Width: 235.0 mm
 Colors: 2
 Colorway: Madeira Polyneon
 Zoom: 0.47

Design: n°58490158556 _22-16-02_WhatsApp Image 2024-10-30 at 22_sweats_235mm

Title: n°58490158556 _22-16-02_WhatsApp Image 2024-10-30 at 22_sweats_235mm

Machine format: Tajima
 Color changes: 1
 Stops: 2
 Trims: 14
 Appliqués: 0
 Left: 117.5 mm
 Right: 117.5 mm
 Up: 34.6 mm
 Down: 34.6 mm
 EndX: 0.0 mm
 EndY: 0.0 mm
 Area: 16258.1 mm²
 Max stitch: 6.9 mm
 Min stitch: 0.0 mm
 Max jump: 6.9 mm
 Total thread: 65.00m
 Total bobbin: 25.73m

Stop Sequence:

#	N#	Color	St.	Code	Name	Chart
1.	1		9,019	1801	Super White	Madeira PolyNeon 40
2.	6		1,667	1878	Cinnamon Candy	Madeira PolyNeon 40



Color Film

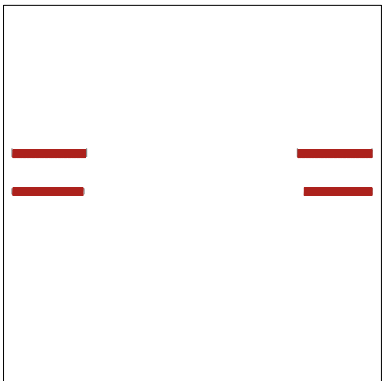
Wilcom EmbroideryStudio – Designing



Stitches: 10,688
Height: 69.2 mm
Width: 235.0 mm
Colors: 2
Colorway: Madeira Polyneon
Zoom: 0.20

Design: **n°58490158556 _22-16-02_WhatsApp Image 2024-10-30 at 22_sweats_235mm**

Title: **n°58490158556 _22-16-02_WhatsApp Image 2024-10-30 at 22_sweats_235mm**



Color: 1
Stop: 1
Element:
Code: 1801
Name: Super White
Chart: Madeira PolyNeon 40
Stitches: 9,019
Thread used: 51.64m

Color: 6
Stop: 2
Element:
Code: 1878
Name: Cinnamon Candy
Chart: Madeira PolyNeon 40
Stitches: 1,667
Thread used: 13.16m