

Production Worksheet

Wilcom EmbroideryStudio – Designing



Stitches: 9,748
 Height: 69.0 mm
 Width: 234.2 mm
 Colors: 2
 Colorway: Madeira Polyneon
 Zoom: 0.47

Design: **n°58490158556 _22-16-02_WhatsApp Image 2024-10-30 at 22_thin
 tees_235mm**

Title: **n°58490158556 _22-16-02_WhatsApp Image 2024-10-30 at
 22_235mm**

Machine format: Tajima
 Color changes: 1
 Stops: 2
 Trims: 14
 Appliqués: 0
 Left: 117.1 mm
 Right: 117.1 mm
 Up: 34.5 mm
 Down: 34.5 mm
 EndX: 0.0 mm
 EndY: 0.0 mm
 Area: 16151.3 mm²
 Max stitch: 6.9 mm
 Min stitch: 0.3 mm
 Max jump: 7.0 mm
 Total thread: 57.61m
 Total bobbin: 22.47m

Stop Sequence:

| # | N# | Color | St. | Code | Name | Chart |
|----|----|-------|-------|------|----------------|---------------------|
| 1. | 1 | | 8,188 | 1801 | Super White | Madeira PolyNeon 40 |
| 2. | 6 | | 1,558 | 1878 | Cinnamon Candy | Madeira PolyNeon 40 |



Color Film

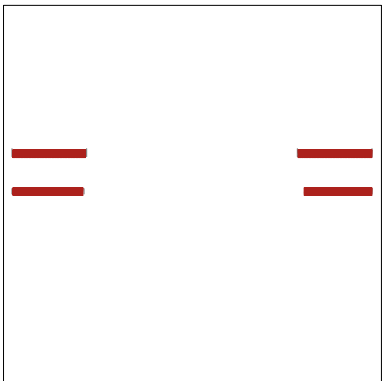
Wilcom EmbroideryStudio – Designing



Stitches: 9,748
Height: 69.0 mm
Width: 234.2 mm
Colors: 2
Colorway: Madeira Polyneon
Zoom: 0.20

Design: **n°58490158556 _22-16-02_WhatsApp Image 2024-10-30 at 22_thin
tees_235mm**

Title: **n°58490158556 _22-16-02_WhatsApp Image 2024-10-30 at
22_235mm**



Color: 1
Stop: 1
Element:
Code: 1801
Name: Super White
Chart: Madeira PolyNeon 40
Stitches: 8,188
Thread used: 45.80m

Color: 6
Stop: 2
Element:
Code: 1878
Name: Cinnamon Candy
Chart: Madeira PolyNeon 40
Stitches: 1,558
Thread used: 11.61m