

Production Worksheet

Wilcom EmbroideryStudio - Designing



Stitches: 4,438
Height: 38.2 mm
Width: 96.9 mm
Colors: 2
Colorway: Madeira Polyneon
Zoom: 1:1

Design: n°58490158556 _22-16-02_WhatsApp Image 2024-10-30 at
22,06,54_97mm_ puffy jackets

Title: n°58490158556 _22-16-02_WhatsApp Image 2024-10-30 at
22,06,54_97mm

Machine format: Tajima
Color changes: 1
Stops: 2
Trims: 12
Appliqués: 0
Left: 48.4 mm
Right: 48.4 mm
Up: 19.1 mm
Down: 19.1 mm
EndX: 0.0 mm
EndY: 0.0 mm
Area: 3702.7 mm²
Max stitch: 7.0 mm
Min stitch: 0.2 mm
Max jump: 7.0 mm
Total thread: 20.10m
Total bobbin: 6.53m

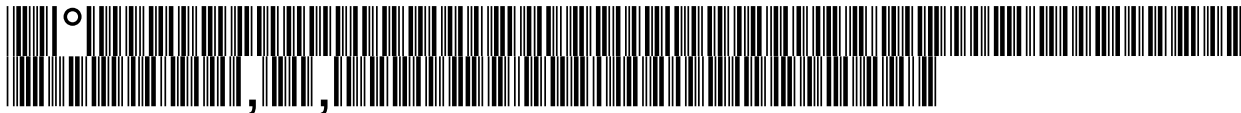
Stop Sequence:

#	N#	Color	St.	Code	Name	Chart
1.	1		4,094	1801	Super White	Madeira PolyNeon 40
2.	6		342	1878	Cinnamon Candy	Madeira PolyNeon 40



Color Film

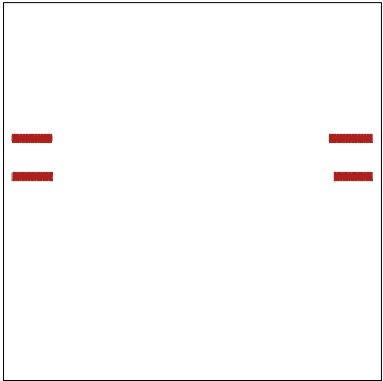
Wilcom EmbroideryStudio - Designing



Stitches: 4,438
Height: 38.2 mm
Width: 96.9 mm
Colors: 2
Colorway: Madeira Polyneon
Zoom: 0.49

Design: **n°58490158556 _22-16-02_WhatsApp Image 2024-10-30 at 22,06,54_97mm_ puffy jackets**

Title: **n°58490158556 _22-16-02_WhatsApp Image 2024-10-30 at 22,06,54_97mm**



Stop #: 1
Element:
Code: 1801
Name: Super White
Chart: Madeira PolyNeon 40
Stitches: 4,094
Thread used: 18.33m

Stop #: 2
Element:
Code: 1878
Name: Cinnamon Candy
Chart: Madeira PolyNeon 40
Stitches: 342
Thread used: 1.57m