

**Production Worksheet**

Wilcom EmbroideryStudio - Designing



Stitches: 13,710  
Height: 89.9 mm  
Width: 235.0 mm  
Colors: 2  
Colorway: Madeira Polyneon  
Zoom: 0.39

Design: n°58490158556 \_22-16-02\_WhatsApp Image 2024-10-30 at 22\_235mm\_amend3\_sweats

Title: n°58490158556 \_22-16-02\_WhatsApp Image 2024-10-30 at 22\_97mm\_amend1

Machine format: Tajima  
Color changes: 1  
Stops: 2  
Trims: 31  
Appliqués: 0  
Left: 117.5 mm  
Right: 117.5 mm  
Up: 45.0 mm  
Down: 45.0 mm  
EndX: 0.0 mm  
EndY: 0.0 mm  
Area: 21134.8 mm<sup>2</sup>  
Max stitch: 7.0 mm  
Min stitch: 0.1 mm  
Max jump: 7.0 mm  
Total thread: 81.14m  
Total bobbin: 31.72m

Stop Sequence:

#	N#	Color	St.	Code	Name	Chart
1.	1		12,742	1801	Super White	Madeira PolyNeon 40
2.	6		966	1878	Cinnamon Candy	Madeira PolyNeon 40



**Color Film**

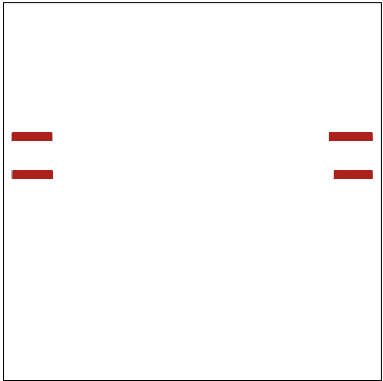
Wilcom EmbroideryStudio - Designing



Stitches: 13,710  
Height: 89.9 mm  
Width: 235.0 mm  
Colors: 2  
Colorway: Madeira Polyneon  
Zoom: 0.20

Design: **n°58490158556 \_22-16-02\_WhatsApp Image 2024-10-30 at 22\_235mm\_amend3\_sweats**

Title: **n°58490158556 \_22-16-02\_WhatsApp Image 2024-10-30 at 22\_97mm\_amend1**



Stop #: 1  
Element:  
Code: 1801  
Name: Super White  
Chart: Madeira PolyNeon 40  
Stitches: 12,742  
Thread used: 73.76m

Stop #: 2  
Element:  
Code: 1878  
Name: Cinnamon Candy  
Chart: Madeira PolyNeon 40  
Stitches: 966  
Thread used: 7.18m