

Production Worksheet

Wilcom EmbroideryStudio - Designing



Stitches: 12,691
Height: 89.9 mm
Width: 235.0 mm
Colors: 2
Colorway: Madeira Polyneon
Zoom: 0.39

Design: **n°58490158556 _22-16-02_WhatsApp Image 2024-10-30 at 22_235mm_amend3_polo**

Title: **n°58490158556 _22-16-02_WhatsApp Image 2024-10-30 at 22_97mm_amend1**

Machine format: Tajima
Color changes: 1
Stops: 2
Trims: 31
Appliqués: 0
Left: 117.5 mm
Right: 117.5 mm
Up: 45.0 mm
Down: 45.0 mm
EndX: 0.0 mm
EndY: 0.0 mm
Area: 21136.1 mm²
Max stitch: 7.0 mm
Min stitch: 0.1 mm
Max jump: 7.0 mm
Total thread: 74.24m
Total bobbin: 28.84m

Stop Sequence:

#	N#	Color	St.	Code	Name	Chart
1.	1		11,799	1801	Super White	Madeira PolyNeon 40
2.	6		890	1878	Cinnamon Candy	Madeira PolyNeon 40



Color Film

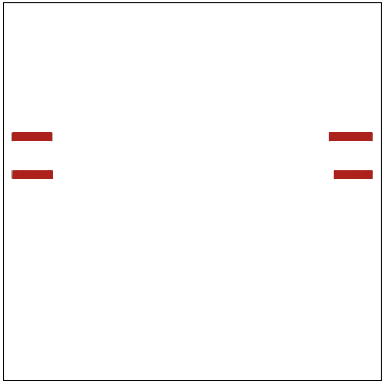
Wilcom EmbroideryStudio - Designing



Stitches: 12,691
Height: 89.9 mm
Width: 235.0 mm
Colors: 2
Colorway: Madeira Polyneon
Zoom: 0.20

Design: **n°58490158556 _22-16-02_WhatsApp Image 2024-10-30 at 22_235mm_amend3_polo**

Title: **n°58490158556 _22-16-02_WhatsApp Image 2024-10-30 at 22_97mm_amend1**



Stop #: 1
Element:
Code: 1801
Name: Super White
Chart: Madeira PolyNeon 40
Stitches: 11,799
Thread used: 67.52m

Stop #: 2
Element:
Code: 1878
Name: Cinnamon Candy
Chart: Madeira PolyNeon 40
Stitches: 890
Thread used: 6.52m