

Production Worksheet

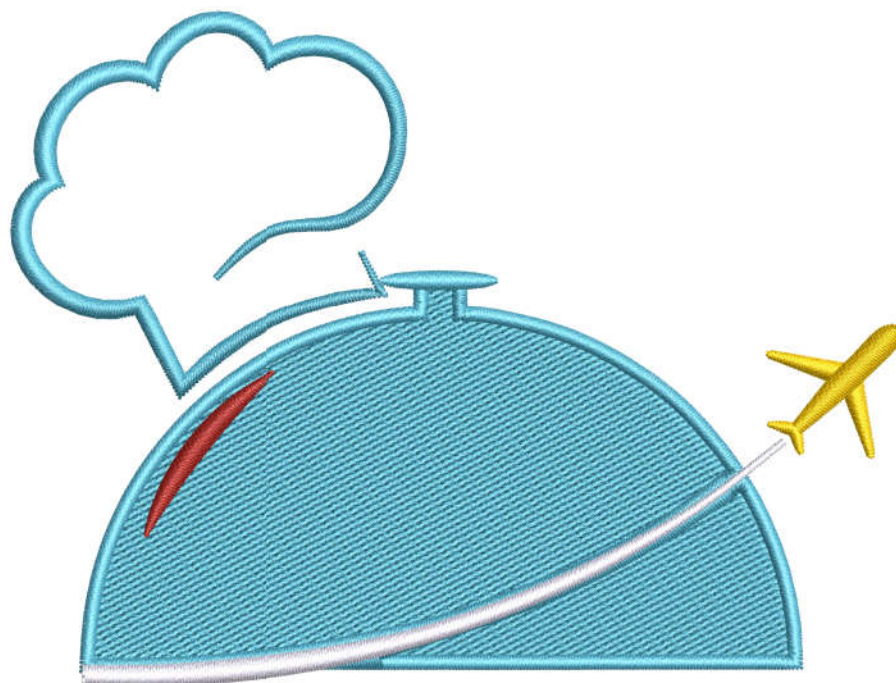
Wilcom EmbroideryStudio - Designing



Stitches: 14,435
Height: 140.3 mm
Width: 190.2 mm
Colors: 5
Colorway: Madeira Polyneon
Zoom: 1:1

Design: n°a0680158682 _12-57-24_atlant service_amend1_190mm

Title: n°a0680158682 _12-57-24_atlant service_95mm



Atlant Services

Production Worksheet

Wilcom EmbroideryStudio - Designing



Stitches: 14,435
 Height: 140.3 mm
 Width: 190.2 mm
 Colors: 5
 Colorway: Madeira Polyneon
 Zoom: 1:1

Design: **n°a0680158682_12-57-24_atlant service_amend1_190mm**

Title: **n°a0680158682_12-57-24_atlant service_95mm**

Machine format: Tajima
 Color changes: 4
 Stops: 5
 Trims: 10
 Appliqués: 0
 Left: 95.1 mm
 Right: 95.1 mm
 Up: 70.2 mm
 Down: 70.2 mm
 EndX: 0.0 mm
 EndY: 0.0 mm
 Area: 26695.0 mm²
 Max stitch: 6.8 mm
 Min stitch: 0.1 mm
 Max jump: 6.8 mm
 Total thread: 78.62m
 Total bobbin: 29.19m

Stop Sequence:

#	N#	Color	St.	Code	Name	Chart
1.	17		9,467	1827	Sky Blue	Madeira PolyNeon 40
2.	6		181	1878	Cinnamon Candy	Madeira PolyNeon 40
3.	1		591	1801	Super White	Madeira PolyNeon 40
4.	3		315	1980		Madeira PolyNeon 40
5.	2		3,879	1800		Madeira PolyNeon 40

Color Film

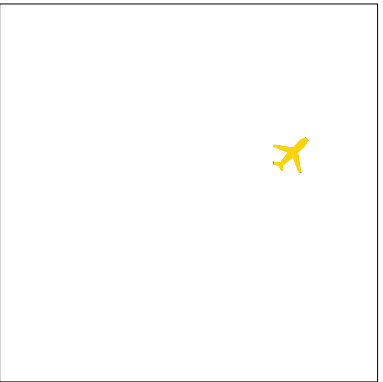
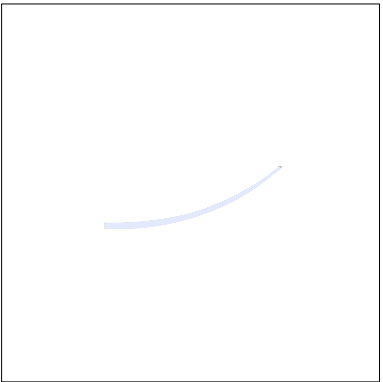
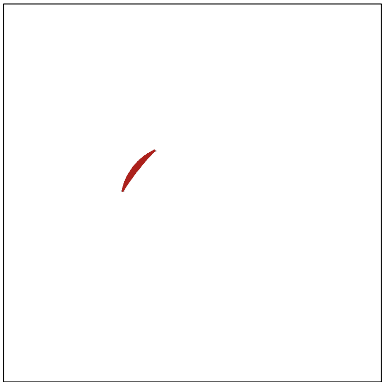
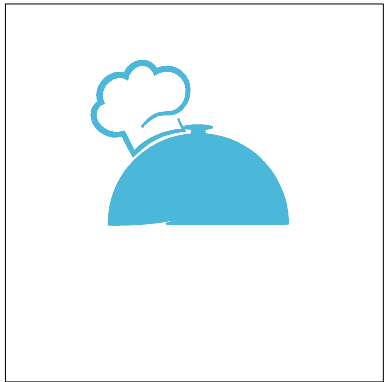
Wilcom EmbroideryStudio - Designing



Stitches: 14,435
Height: 140.3 mm
Width: 190.2 mm
Colors: 5
Colorway: Madeira Polyneon
Zoom: 0.25

Design: **n°a0680158682_12-57-24_atlant service_amend1_190mm**

Title: **n°a0680158682_12-57-24_atlant service_95mm**



Stop #: 1
Element:
Code: 1827
Name: Sky Blue
Chart: Madeira PolyNeon 40
Stitches: 9,467
Thread used: 55.49m

Stop #: 2
Element:
Code: 1878
Name: Cinnamon Candy
Chart: Madeira PolyNeon 40
Stitches: 181
Thread used: 0.86m

Stop #: 3
Element:
Code: 1801
Name: Super White
Chart: Madeira PolyNeon 40
Stitches: 591
Thread used: 2.91m

Stop #: 4
Element:
Code: 1980
Name:
Chart: Madeira PolyNeon 40
Stitches: 315
Thread used: 1.52m



Stop #: 5
Element:
Code: 1800
Name:
Chart: Madeira PolyNeon 40
Stitches: 3,879
Thread used: 17.34m