

Production Worksheet

Wilcom EmbroideryStudio - Designing



Stitches: 22,207
 Height: 188.2 mm
 Width: 255.2 mm
 Colors: 5
 Colorway: Madeira Polyneon
 Zoom: 0.39

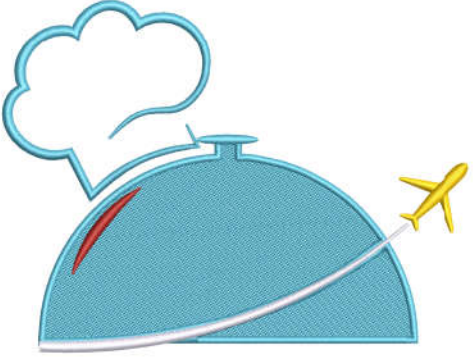
Design: n°a0680158682 _12-57-24_atlant service_amend1_255mm

Title: n°a0680158682 _12-57-24_atlant service_95mm

Machine format: Tajima
 Color changes: 4
 Stops: 5
 Trims: 10
 Appliqués: 0
 Left: 127.6 mm
 Right: 127.6 mm
 Up: 94.1 mm
 Down: 94.1 mm
 EndX: 0.0 mm
 EndY: 0.0 mm
 Area: 48042.0 mm²
 Max stitch: 7.0 mm
 Min stitch: 0.3 mm
 Max jump: 7.0 mm
 Total thread: 130.79m
 Total bobbin: 50.89m

Stop Sequence:

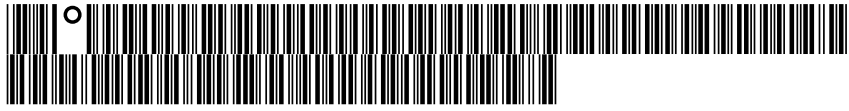
#	N#	Color	St.	Code	Name	Chart
1.	17		15,493	1827	Sky Blue	Madeira PolyNeon 40
2.	6		251	1878	Cinnamon Candy	Madeira PolyNeon 40
3.	1		820	1801	Super White	Madeira PolyNeon 40
4.	3		427	1980		Madeira PolyNeon 40
5.	2		5,214	1800		Madeira PolyNeon 40



Atlant Services

Color Film

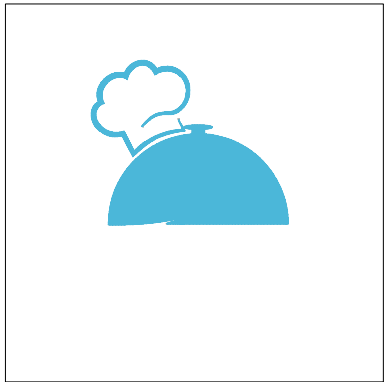
Wilcom EmbroideryStudio - Designing



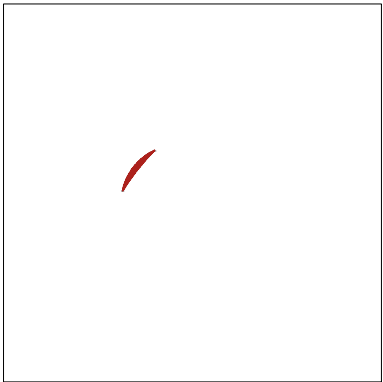
Stitches: 22,207
Height: 188.2 mm
Width: 255.2 mm
Colors: 5
Colorway: Madeira Polyneon
Zoom: 0.19

Design: n°a0680158682 _12-57-24_atlant service_amend1_255mm

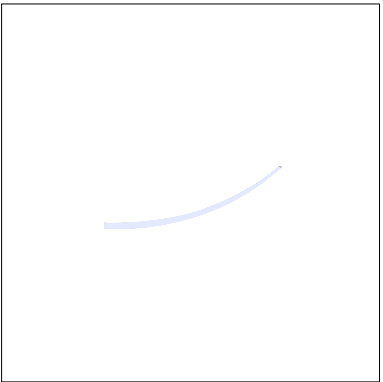
Title: n°a0680158682 _12-57-24_atlant service_95mm



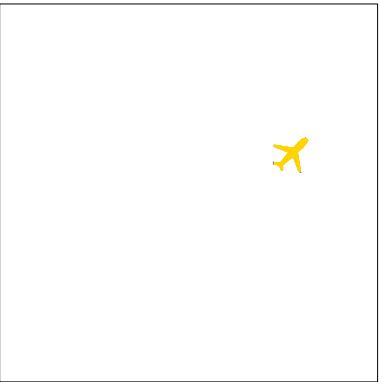
Stop #: 1
Element:
Code: 1827
Name: Sky Blue
Chart: Madeira PolyNeon 40
Stitches: 15,493
Thread used: 95.90m



Stop #: 2
Element:
Code: 1878
Name: Cinnamon Candy
Chart: Madeira PolyNeon 40
Stitches: 251
Thread used: 1.35m



Stop #: 3
Element:
Code: 1801
Name: Super White
Chart: Madeira PolyNeon 40
Stitches: 820
Thread used: 4.62m



Stop #: 4
Element:
Code: 1980
Name:
Chart: Madeira PolyNeon 40
Stitches: 427
Thread used: 2.38m



Stop #: 5
Element:
Code: 1800
Name:
Chart: Madeira PolyNeon 40
Stitches: 5,214
Thread used: 26.03m