

**Production Worksheet**

Wilcom EmbroideryStudio - Designing



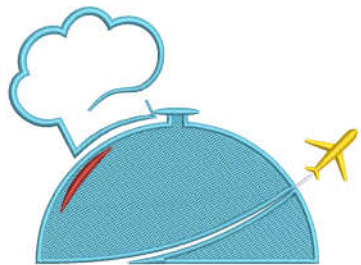
Stitches: 13,720  
 Height: 140.3 mm  
 Width: 190.2 mm  
 Colors: 5  
 Colorway: Madeira Polyneon  
 Zoom: 0.39

Design: **n°a0680158682\_12-57-24\_atlant service\_amend2\_190mm**  
 Title: **n°a0680158682\_12-57-24\_atlant service\_95mm**

Machine format: Tajima  
 Color changes: 4  
 Stops: 5  
 Trims: 10  
 Appliqués: 0  
 Left: 95.1 mm  
 Right: 95.1 mm  
 Up: 70.2 mm  
 Down: 70.2 mm  
 EndX: 0.0 mm  
 EndY: 0.0 mm  
 Area: 26695.0 mm<sup>2</sup>  
 Max stitch: 6.8 mm  
 Min stitch: 0.3 mm  
 Max jump: 6.8 mm  
 Total thread: 74.78m  
 Total bobbin: 27.76m

Stop Sequence:

#	N#	Color	St.	Code	Name	Chart
1.	17		9,304	1827	Sky Blue	Madeira PolyNeon 40
2.	6		181	1878	Cinnamon Candy	Madeira PolyNeon 40
3.	3		311	1980		Madeira PolyNeon 40
4.	1		46	1801	Super White	Madeira PolyNeon 40
5.	2		3,876	1800		Madeira PolyNeon 40



*Atlant Services*

**Color Film**

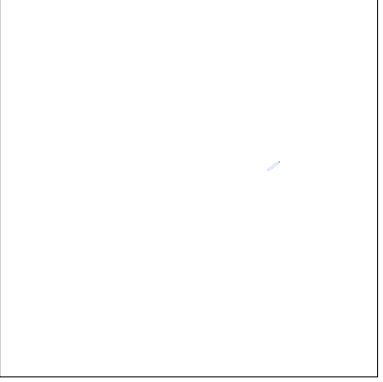
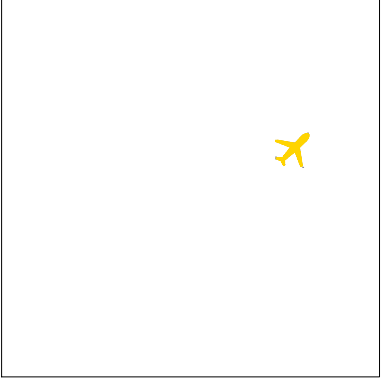
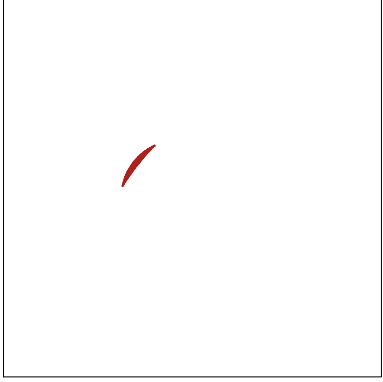
Wilcom EmbroideryStudio - Designing



Stitches: 13,720  
Height: 140.3 mm  
Width: 190.2 mm  
Colors: 5  
Colorway: Madeira Polyneon  
Zoom: 0.25

Design: n°a0680158682\_12-57-24\_atlant service\_amend2\_190mm

Title: n°a0680158682\_12-57-24\_atlant service\_95mm



Stop #: 1  
Element:  
Code: 1827  
Name: Sky Blue  
Chart: Madeira PolyNeon 40  
Stitches: 9,304  
Thread used: 54.41m

Stop #: 2  
Element:  
Code: 1878  
Name: Cinnamon Candy  
Chart: Madeira PolyNeon 40  
Stitches: 181  
Thread used: 0.86m

Stop #: 3  
Element:  
Code: 1980  
Name:  
Chart: Madeira PolyNeon 40  
Stitches: 311  
Thread used: 1.51m

Stop #: 4  
Element:  
Code: 1801  
Name: Super White  
Chart: Madeira PolyNeon 40  
Stitches: 46  
Thread used: 0.16m



Stop #: 5  
Element:  
Code: 1800  
Name:  
Chart: Madeira PolyNeon 40  
Stitches: 3,876  
Thread used: 17.33m