

**Production Worksheet**

Wilcom EmbroideryStudio - Designing



Stitches: 17,472  
 Height: 166.1 mm  
 Width: 225.2 mm  
 Colors: 5  
 Colorway: Madeira Polyneon  
 Zoom: 0.39

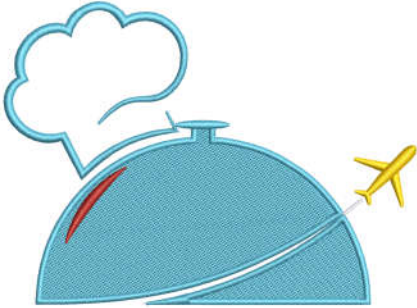
Design: n°a0680158682 \_12-57-24\_atlant service\_amend2\_225mm

Title: n°a0680158682 \_12-57-24\_atlant service\_95mm

Machine format: Tajima  
 Color changes: 4  
 Stops: 5  
 Trims: 10  
 Appliqués: 0  
 Left: 112.6 mm  
 Right: 112.6 mm  
 Up: 83.1 mm  
 Down: 83.1 mm  
 EndX: 0.0 mm  
 EndY: 0.0 mm  
 Area: 37413.8 mm<sup>2</sup>  
 Max stitch: 6.9 mm  
 Min stitch: 0.3 mm  
 Max jump: 6.9 mm  
 Total thread: 99.55m  
 Total bobbin: 37.99m

Stop Sequence:

#	N#	Color	St.	Code	Name	Chart
1.	17		12,238	1827	Sky Blue	Madeira PolyNeon 40
2.	6		218	1878	Cinnamon Candy	Madeira PolyNeon 40
3.	3		371	1980		Madeira PolyNeon 40
4.	1		54	1801	Super White	Madeira PolyNeon 40
5.	2		4,589	1800		Madeira PolyNeon 40



*Atlant Services*

**Color Film**

Wilcom EmbroideryStudio - Designing



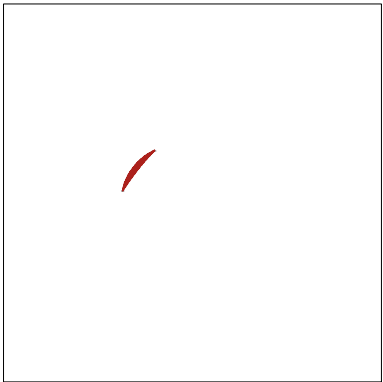
Stitches: 17,472  
Height: 166.1 mm  
Width: 225.2 mm  
Colors: 5  
Colorway: Madeira Polyneon  
Zoom: 0.21

Design: n°a0680158682\_12-57-24\_atlant service\_amend2\_225mm

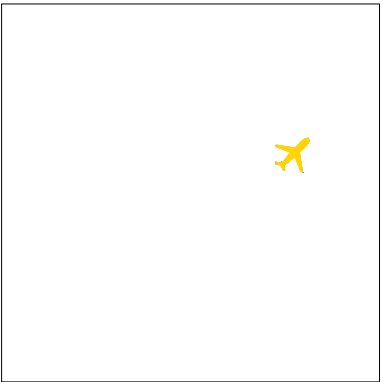
Title: n°a0680158682\_12-57-24\_atlant service\_95mm



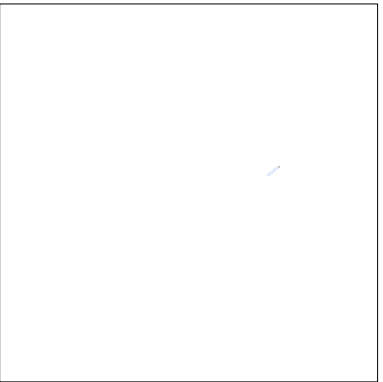
Stop #: 1  
Element:  
Code: 1827  
Name: Sky Blue  
Chart: Madeira PolyNeon 40  
Stitches: 12,238  
Thread used: 73.99m



Stop #: 2  
Element:  
Code: 1878  
Name: Cinnamon Candy  
Chart: Madeira PolyNeon 40  
Stitches: 218  
Thread used: 1.11m



Stop #: 3  
Element:  
Code: 1980  
Name:  
Chart: Madeira PolyNeon 40  
Stitches: 371  
Thread used: 1.95m



Stop #: 4  
Element:  
Code: 1801  
Name: Super White  
Chart: Madeira PolyNeon 40  
Stitches: 54  
Thread used: 0.20m



Stop #: 5  
Element:  
Code: 1800  
Name:  
Chart: Madeira PolyNeon 40  
Stitches: 4,589  
Thread used: 21.81m