

Production Worksheet

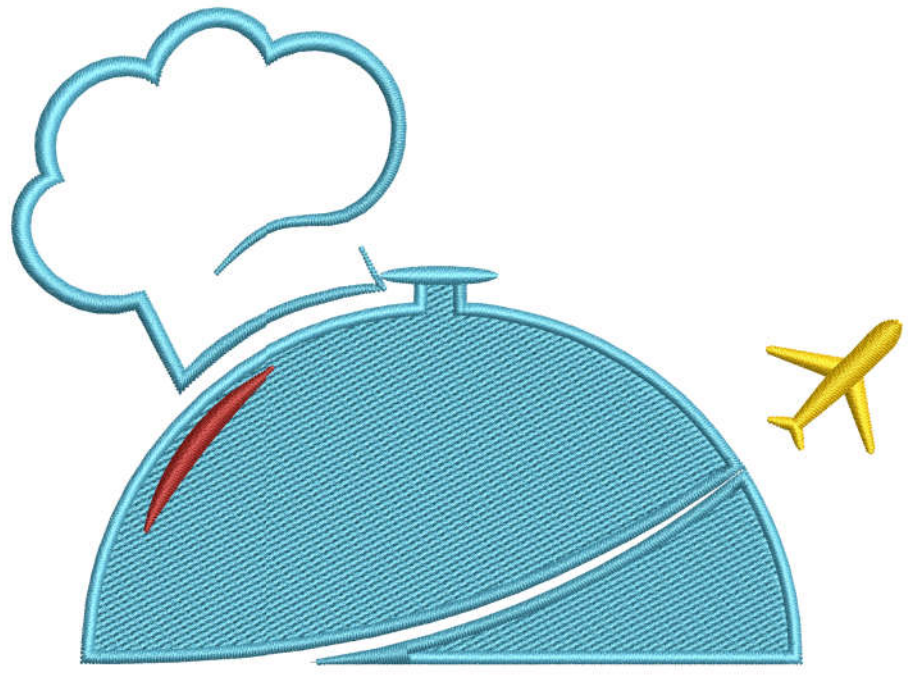
Wilcom EmbroideryStudio - Designing



Design: n°a0680158682 _12-57-24_atlant service_190mm

Title: n°a0680158682 _12-57-24_atlant service_190mm

Stitches: 14,137
Height: 140.2 mm
Width: 190.2 mm
Colors: 4
Colorway: Madeira Polyneon
Zoom: 1:1



Atlant Services

Production Worksheet

Wilcom EmbroideryStudio - Designing



Design: **n°a0680158682 _12-57-24_atlant service_190mm**

Title: **n°a0680158682 _12-57-24_atlant service_190mm**

Stitches: 14,137
 Height: 140.2 mm
 Width: 190.2 mm
 Colors: 4
 Colorway: Madeira Polyneon
 Zoom: 1:1

Machine format: Tajima
 Color changes: 3
 Stops: 4
 Trims: 9
 Appliqués: 0
 Left: 95.1 mm
 Right: 95.1 mm
 Up: 70.1 mm
 Down: 70.1 mm
 EndX: 0.0 mm
 EndY: 0.0 mm
 Area: 26659.8 mm²
 Max stitch: 6.8 mm
 Min stitch: 0.1 mm
 Max jump: 6.8 mm
 Total thread: 75.29m
 Total bobbin: 27.62m

Stop Sequence:

#	N#	Color	St.	Code	Name	Chart
1.	17		9,578	1827	Sky Blue	Madeira PolyNeon 40
2.	6		209	1878	Cinnamon Candy	Madeira PolyNeon 40
3.	3		371	1980		Madeira PolyNeon 40
4.	2		3,977	1800		Madeira PolyNeon 40

Color Film

Wilcom EmbroideryStudio - Designing



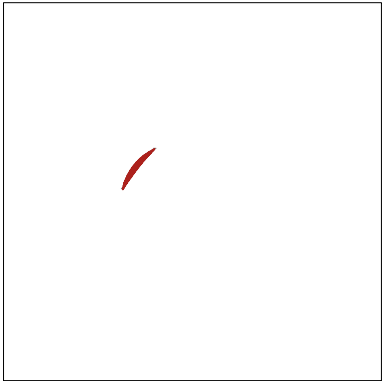
Stitches: 14,137
Height: 140.2 mm
Width: 190.2 mm
Colors: 4
Colorway: Madeira Polyneon
Zoom: 0.25

Design: **n°a0680158682_12-57-24_atlant service_190mm**

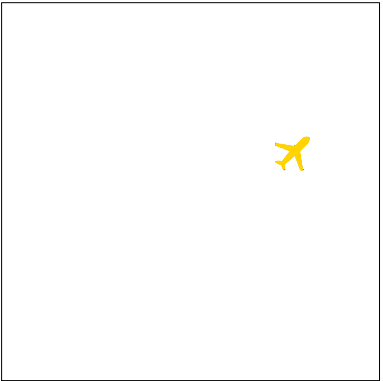
Title: **n°a0680158682_12-57-24_atlant service_190mm**



Stop #: 1
Element:
Code: 1827
Name: Sky Blue
Chart: Madeira PolyNeon 40
Stitches: 9,578
Thread used: 55.17m



Stop #: 2
Element:
Code: 1878
Name: Cinnamon Candy
Chart: Madeira PolyNeon 40
Stitches: 209
Thread used: 0.99m



Stop #: 3
Element:
Code: 1980
Name:
Chart: Madeira PolyNeon 40
Stitches: 371
Thread used: 1.78m



Stop #: 4
Element:
Code: 1800
Name:
Chart: Madeira PolyNeon 40
Stitches: 3,977
Thread used: 16.95m