

# Production Worksheet

Wilcom EmbroideryStudio – Designing



Stitches: 11,509  
 Height: 85.4 mm  
 Width: 85.4 mm  
 Colors: 4  
 Colorway: Madeira Polyneon  
 Zoom: 1:1

Design: n°8d950158760 6bf0e9a8\_2024-11-04\_16-22-39\_logo Crinq new  
 Title: n°8d950158760 6bf0e9a8\_2024-11-04\_16-22-39\_logo Crinq new

Machine format: Tajima  
 Color changes: 9  
 Stops: 10  
 Trims: 37  
 Appliqués: 0  
 Left: 42.7 mm  
 Right: 42.7 mm  
 Up: 42.7 mm  
 Down: 42.7 mm  
 EndX: 0.0 mm  
 EndY: 0.0 mm  
 Area: 7291.7 mm<sup>2</sup>  
 Max stitch: 7.3 mm  
 Min stitch: 0.0 mm  
 Max jump: 6.8 mm  
 Total thread: 58.13m  
 Total bobbin: 20.21m

Stop Sequence:

#	N#	Color	St.	Code	Name	Chart
1.	2	█	305	2800		Madeira PolyNeon 40
2.	1	█	731	1801	Super White	Madeira PolyNeon 40
3.	2	█	1,332	2800		Madeira PolyNeon 40
4.	10	█	163	1993	Watermelon	Madeira PolyNeon 40
5.	1	█	13	1801	Super White	Madeira PolyNeon 40
6.	10	█	237	1993	Watermelon	Madeira PolyNeon 40
7.	29	█	289	1810	Gray Haze	Madeira PolyNeon 40
8.	10	█	5,545	1993	Watermelon	Madeira PolyNeon 40
9.	2	█	1,412	2800		Madeira PolyNeon 40
10.	1	█	1,480	1801	Super White	Madeira PolyNeon 40



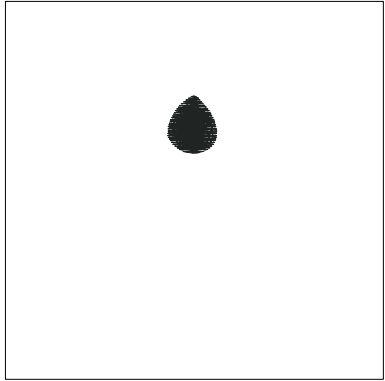
# Color Film

Wilcom EmbroideryStudio – Designing

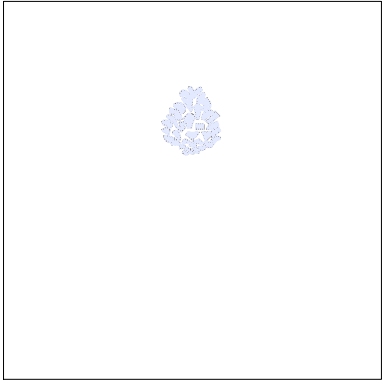


Stitches: 11,509  
Height: 85.4 mm  
Width: 85.4 mm  
Colors: 4  
Colorway: Madeira Polyneon  
Zoom: 0.56

Design: n°8d950158760 6bf0e9a8\_2024-11-04\_16-22-39\_logo Crinq new  
Title: n°8d950158760 6bf0e9a8\_2024-11-04\_16-22-39\_logo Crinq new



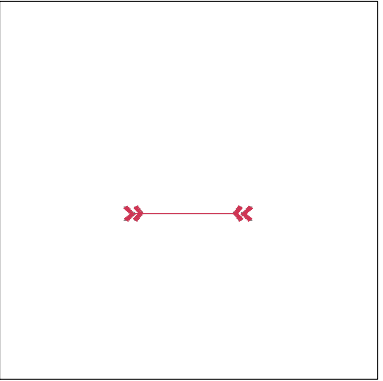
Color: 2  
Stop: 1  
Element:  
Code: 2800  
Name:  
Chart: Madeira PolyNeon 40  
Stitches: 305  
Thread used: 1.59m



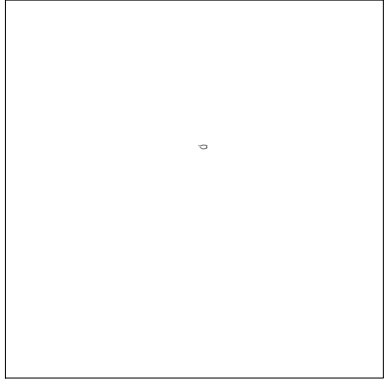
Color: 1  
Stop: 2  
Element:  
Code: 1801  
Name: Super White  
Chart: Madeira PolyNeon 40  
Stitches: 731  
Thread used: 2.61m



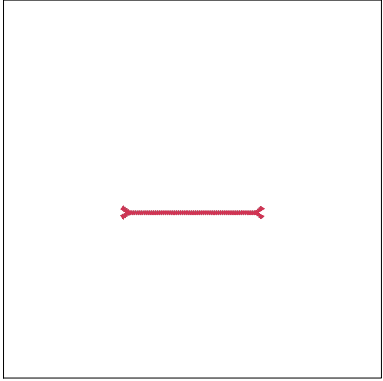
Color: 2  
Stop: 3  
Element:  
Code: 2800  
Name:  
Chart: Madeira PolyNeon 40  
Stitches: 1,332  
Thread used: 4.66m



Color: 10  
Stop: 4  
Element:  
Code: 1993  
Name: Watermelon  
Chart: Madeira PolyNeon 40  
Stitches: 163  
Thread used: 0.56m



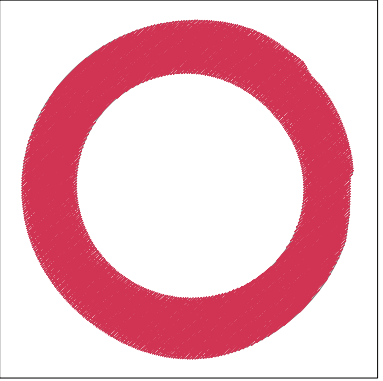
Color: 1  
Stop: 5  
Element:  
Code: 1801  
Name: Super White  
Chart: Madeira PolyNeon 40  
Stitches: 13  
Thread used: 0.04m



Color: 10  
Stop: 6  
Element:  
Code: 1993  
Name: Watermelon  
Chart: Madeira PolyNeon 40  
Stitches: 237  
Thread used: 0.84m



Color: 29  
Stop: 7  
Element:  
Code: 1810  
Name: Gray Haze  
Chart: Madeira PolyNeon 40  
Stitches: 289  
Thread used: 0.94m



Color: 10  
Stop: 8  
Element:  
Code: 1993  
Name: Watermelon  
Chart: Madeira PolyNeon 40  
Stitches: 5,545  
Thread used: 33.72m

**Color Film**

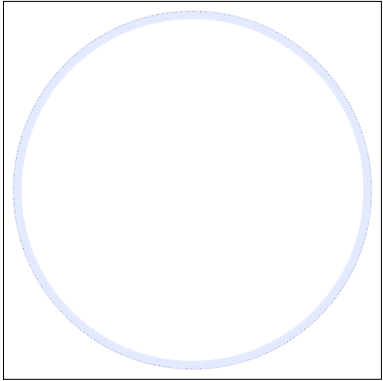
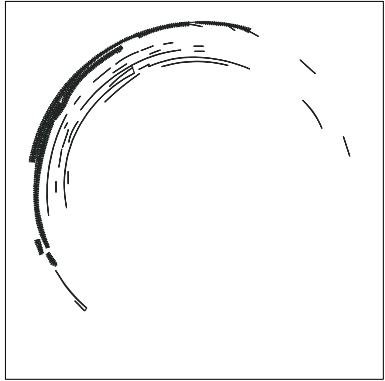
Wilcom EmbroideryStudio – Designing



Stitches: 11,509  
Height: 85.4 mm  
Width: 85.4 mm  
Colors: 4  
Colorway: Madeira Polyneon  
Zoom: 0.56

Design: **n°8d950158760 6bf0e9a8\_2024-11-04\_16-22-39\_logo Crinq new**

Title: **n°8d950158760 6bf0e9a8\_2024-11-04\_16-22-39\_logo Crinq new**



Color: 2  
Stop: 9  
Element:  
Code: 2800  
Name:  
Chart: Madeira PolyNeon 40  
Stitches: 1,412  
Thread used: 5.18m

Color: 1  
Stop: 10  
Element:  
Code: 1801  
Name: Super White  
Chart: Madeira PolyNeon 40  
Stitches: 1,480  
Thread used: 6.98m