

Production Worksheet

Wilcom EmbroideryStudio – Designing



Stitches: 11,520
 Height: 85.4 mm
 Width: 85.4 mm
 Colors: 4
 Colorway: Madeira Polyneon
 Zoom: 1:1

Design: n°8d950158760 6bf0e9a8_2024-11-04_16-22-39_logo Crinq new_amend1

Title: n°8d950158760 6bf0e9a8_2024-11-04_16-22-39_logo Crinq new

Machine format: Tajima
 Color changes: 9
 Stops: 10
 Trims: 37
 Appliqués: 0
 Left: 42.7 mm
 Right: 42.7 mm
 Up: 42.7 mm
 Down: 42.7 mm
 EndX: 0.0 mm
 EndY: 0.0 mm
 Area: 7291.7 mm²
 Max stitch: 8.2 mm
 Min stitch: 0.0 mm
 Max jump: 6.8 mm
 Total thread: 57.90m
 Total bobbin: 20.07m



Stop Sequence:

#	N#	Color	St.	Code	Name	Chart
1.	2	Black	305	2800		Madeira PolyNeon 40
2.	1	White	731	1801	Super White	Madeira PolyNeon 40
3.	2	Black	1,343	2800		Madeira PolyNeon 40
4.	10	Red	163	1993	Watermelon	Madeira PolyNeon 40
5.	1	White	13	1801	Super White	Madeira PolyNeon 40
6.	10	Red	237	1993	Watermelon	Madeira PolyNeon 40
7.	29	Gray	289	1810	Gray Haze	Madeira PolyNeon 40
8.	10	Red	5,545	1993	Watermelon	Madeira PolyNeon 40
9.	2	Black	1,412	2800		Madeira PolyNeon 40
10.	1	White	1,480	1801	Super White	Madeira PolyNeon 40

Color Film

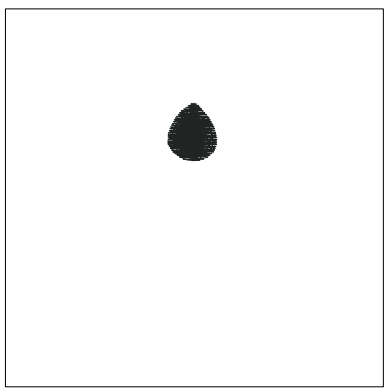
Wilcom EmbroideryStudio – Designing



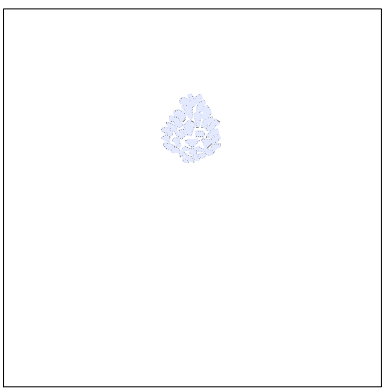
Stitches: 11,520
Height: 85.4 mm
Width: 85.4 mm
Colors: 4
Colorway: Madeira Polyneon
Zoom: 0.56

Design: n°8d950158760 6bf0e9a8_2024-11-04_16-22-39_logo Crinq new_amend1

Title: n°8d950158760 6bf0e9a8_2024-11-04_16-22-39_logo Crinq new



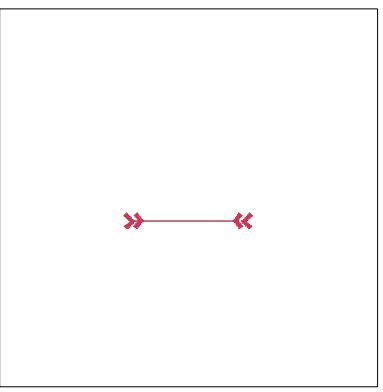
Color: 2
Stop: 1
Element:
Code: 2800
Name:
Chart: Madeira PolyNeon 40
Stitches: 305
Thread used: 1.59m



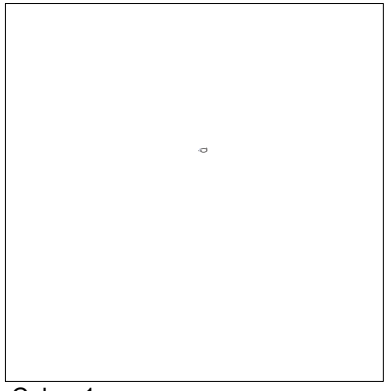
Color: 1
Stop: 2
Element:
Code: 1801
Name: Super White
Chart: Madeira PolyNeon 40
Stitches: 731
Thread used: 2.61m



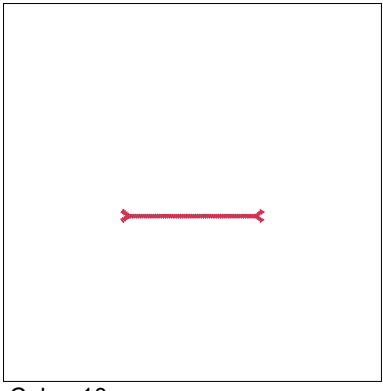
Color: 2
Stop: 3
Element:
Code: 2800
Name:
Chart: Madeira PolyNeon 40
Stitches: 1,343
Thread used: 4.43m



Color: 10
Stop: 4
Element:
Code: 1993
Name: Watermelon
Chart: Madeira PolyNeon 40
Stitches: 163
Thread used: 0.56m



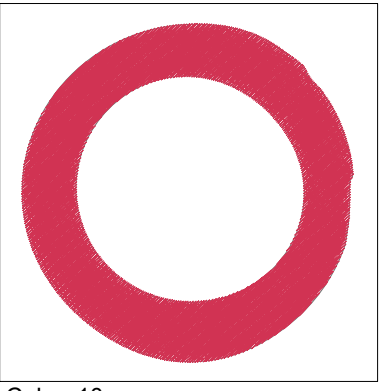
Color: 1
Stop: 5
Element:
Code: 1801
Name: Super White
Chart: Madeira PolyNeon 40
Stitches: 13
Thread used: 0.04m



Color: 10
Stop: 6
Element:
Code: 1993
Name: Watermelon
Chart: Madeira PolyNeon 40
Stitches: 237
Thread used: 0.84m



Color: 29
Stop: 7
Element:
Code: 1810
Name: Gray Haze
Chart: Madeira PolyNeon 40
Stitches: 289
Thread used: 0.94m



Color: 10
Stop: 8
Element:
Code: 1993
Name: Watermelon
Chart: Madeira PolyNeon 40
Stitches: 5,545
Thread used: 33.72m

Color Film

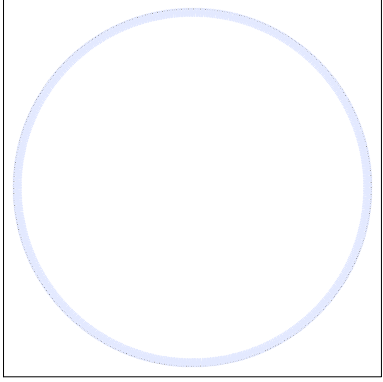
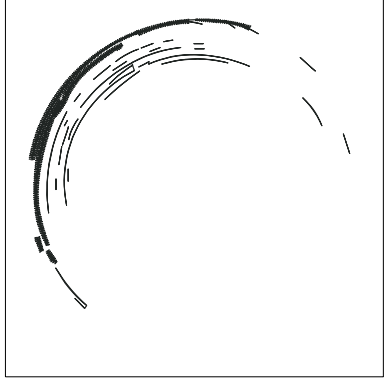
Wilcom EmbroideryStudio – Designing



Stitches: 11,520
Height: 85.4 mm
Width: 85.4 mm
Colors: 4
Colorway: Madeira Polyneon
Zoom: 0.56

Design: **n°8d950158760 6bf0e9a8_2024-11-04_16-22-39_logo Crinq
new_amend1**

Title: **n°8d950158760 6bf0e9a8_2024-11-04_16-22-39_logo Crinq new**



Color: 2
Stop: 9
Element:
Code: 2800
Name:
Chart: Madeira PolyNeon 40
Stitches: 1,412
Thread used: 5.18m

Color: 1
Stop: 10
Element:
Code: 1801
Name: Super White
Chart: Madeira PolyNeon 40
Stitches: 1,480
Thread used: 6.98m