

Production Worksheet

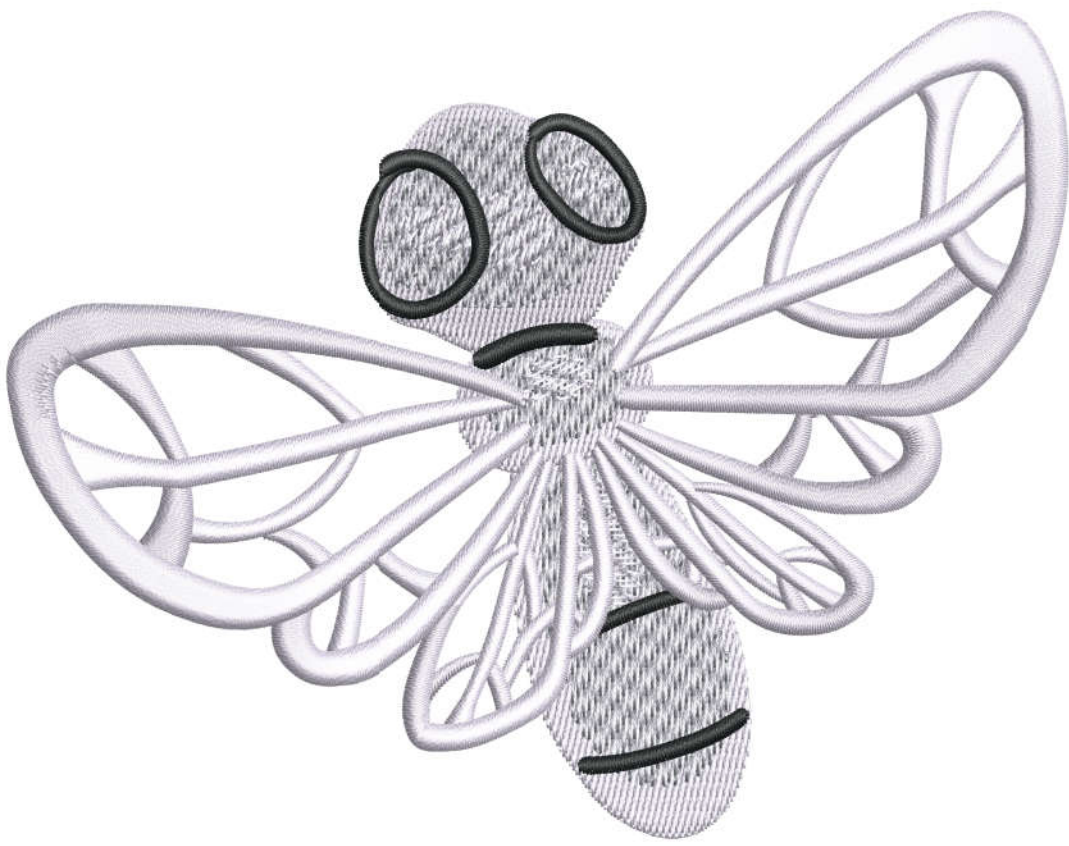
Wilcom EmbroideryStudio - Designing



Stitches: 16,835
Height: 109.5 mm
Width: 140.4 mm
Colors: 3
Colorway: Madeira Classic
Zoom: 1:1

Design: **n°2a460159021 _16-43-05_Capture decran 2024-10-30 a 10_amend1**

Title: **n°2a460159021 _16-43-05_Capture decran 2024-10-30 a 10_amend1**



Production Worksheet

Wilcom EmbroideryStudio - Designing



Stitches: 16,835
 Height: 109.5 mm
 Width: 140.4 mm
 Colors: 3
 Colorway: Madeira Classic
 Zoom: 1:1

Design: **n°2a460159021 _16-43-05_Capture decran 2024-10-30 a 10_amend1**

Title: **n°2a460159021 _16-43-05_Capture decran 2024-10-30 a 10_amend1**

Machine format: Tajima
 Color changes: 5
 Stops: 6
 Trims: 16
 Appliqués: 0
 Left: 70.2 mm
 Right: 70.2 mm
 Up: 54.7 mm
 Down: 54.7 mm
 EndX: 0.0 mm
 EndY: 0.0 mm
 Area: 15367.5 mm²
 Max stitch: 11.6 mm
 Min stitch: 0.1 mm
 Max jump: 6.9 mm
 Total thread: 104.03m
 Total bobbin: 41.34m

Stop Sequence:

#	N#	Color	St.	Code	Name	Chart
1.	1		5,056	1005	Fluorescent White	Madeira Classic 40
2.	29		768	1212	Stainless Steel	Madeira Classic 40
3.	1		260	1005	Fluorescent White	Madeira Classic 40
4.	2		235	1000	Noir	Madeira Classic 40
5.	1		9,716	1005	Fluorescent White	Madeira Classic 40
6.	2		798	1000	Noir	Madeira Classic 40

Color Film

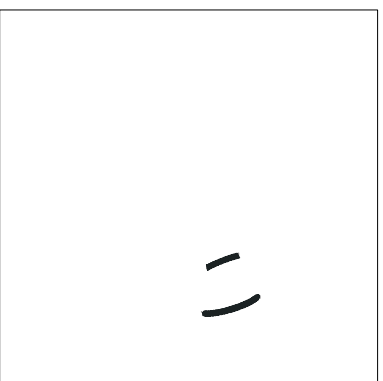
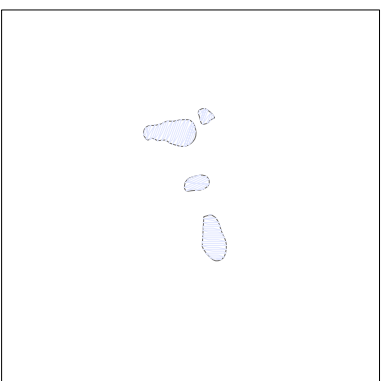
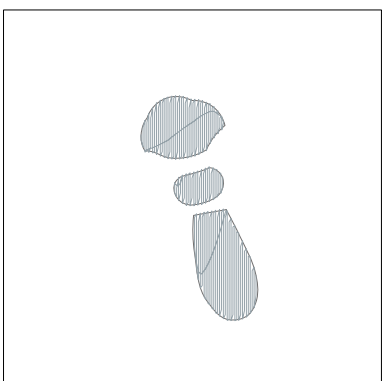
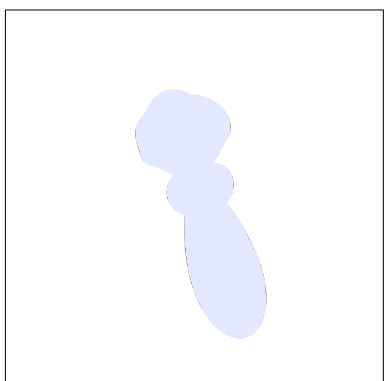
Wilcom EmbroideryStudio - Designing



Stitches: 16,835
Height: 109.5 mm
Width: 140.4 mm
Colors: 3
Colorway: Madeira Classic
Zoom: 0.34

Design: **n°2a460159021 _16-43-05_Capture decran 2024-10-30 a 10_amend1**

Title: **n°2a460159021 _16-43-05_Capture decran 2024-10-30 a 10_amend1**

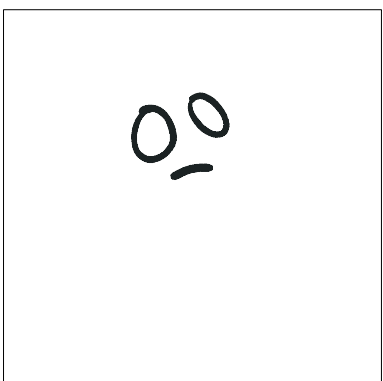
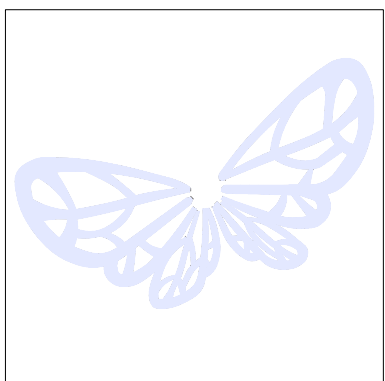


Stop #: 1
Element:
Code: 1005
Name: Fluorescent White
Chart: Madeira Classic 40
Stitches: 5,056
Thread used: 31.46m

Stop #: 2
Element:
Code: 1212
Name: Stainless Steel
Chart: Madeira Classic 40
Stitches: 768
Thread used: 4.69m

Stop #: 3
Element:
Code: 1005
Name: Fluorescent White
Chart: Madeira Classic 40
Stitches: 260
Thread used: 1.33m

Stop #: 4
Element:
Code: 1000
Name: Noir
Chart: Madeira Classic 40
Stitches: 235
Thread used: 1.13m



Stop #: 5
Element:
Code: 1005
Name: Fluorescent White
Chart: Madeira Classic 40
Stitches: 9,716
Thread used: 60.93m

Stop #: 6
Element:
Code: 1000
Name: Noir
Chart: Madeira Classic 40
Stitches: 798
Thread used: 3.88m