

Production Worksheet

Wilcom EmbroideryStudio – Designing



Stitches: 4,191
Height: 69.9 mm
Width: 85.2 mm
Colors: 2
Colorway: Madeira Polyneon
Zoom: 1:1

Design: **n°879b0159169 9ee69cbb_2024-11-06_14-06-54_LOGO 3 BLANC ET ROUGE**

Title: **SP _ DVS _ n**

Machine format: Tajima
Color changes: 1
Stops: 2
Trims: 17
Appliqués: 0
Left: 42.6 mm
Right: 42.6 mm
Up: 34.9 mm
Down: 34.9 mm
EndX: 0.0 mm
EndY: 0.0 mm
Area: 5954.0 mm²
Max stitch: 11.8 mm
Min stitch: 0.2 mm
Max jump: 6.7 mm
Total thread: 24.95m
Total bobbin: 9.70m

Stop Sequence:

#	N#	Color	St.	Code	Name	Chart
1.	1		4,000	1801	Super White	Madeira PolyNeon 40
2.	5		189	1965	Paprika	Madeira PolyNeon 40



Color Film

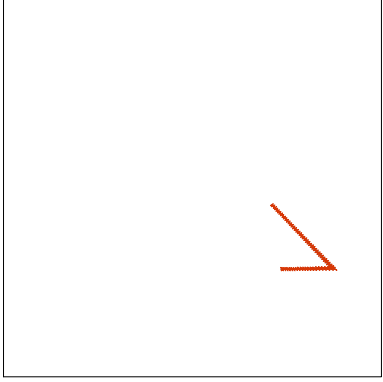
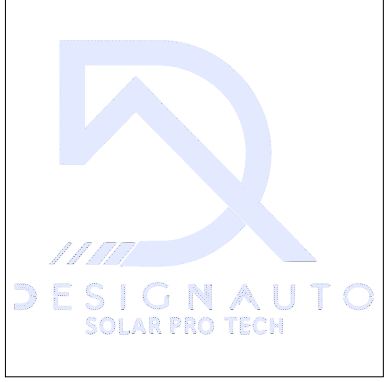
Wilcom EmbroideryStudio – Designing



Stitches: 4,191
Height: 69.9 mm
Width: 85.2 mm
Colors: 2
Colorway: Madeira Polyneon
Zoom: 0.56

Design: **n°879b0159169 9ee69cbb_2024-11-06_14-06-54_LOGO 3 BLANC
ET ROUGE**

Title: **SP _ DVS _ n**



Color: 1
Stop: 1
Element:
Code: 1801
Name: Super White
Chart: Madeira PolyNeon 40
Stitches: 4,000
Thread used: 24.03m

Color: 5
Stop: 2
Element:
Code: 1965
Name: Paprika
Chart: Madeira PolyNeon 40
Stitches: 189
Thread used: 0.72m