

# Production Worksheet

Wilcom EmbroideryStudio - Designing



Stitches: 14,010  
 Height: 88.2 mm  
 Width: 58.4 mm  
 Colors: 5  
 Colorway: Madeira Polyneon  
 Zoom: 1:1

Design: n°2df80159548 \_15-29-59\_logo\_1\_HQ

Title: n°2df80159548 \_15-29-59\_logo\_1\_HQ

Machine format: Tajima  
 Color changes: 4  
 Stops: 5  
 Trims: 9  
 Appliqués: 0  
 Left: 29.2 mm  
 Right: 29.2 mm  
 Up: 44.1 mm  
 Down: 44.1 mm  
 EndX: 0.0 mm  
 EndY: 0.0 mm  
 Area: 5148.1 mm<sup>2</sup>  
 Max stitch: 7.0 mm  
 Min stitch: 0.3 mm  
 Max jump: 7.0 mm  
 Total thread: 73.92m  
 Total bobbin: 26.90m

Stop Sequence:

#	N#	Color	St.	Code	Name	Chart
1.	16		6,854	1797	Hanukkuh Blue	Madeira PolyNeon 40
2.	6		3,674	1878	Cinnamon Candy	Madeira PolyNeon 40
3.	25		2,095	1556	Taste of Honey	Madeira PolyNeon 40
4.	24		118	1927	Burly Wood	Madeira PolyNeon 40
5.	1		1,267	1801	Super White	Madeira PolyNeon 40



**Color Film**

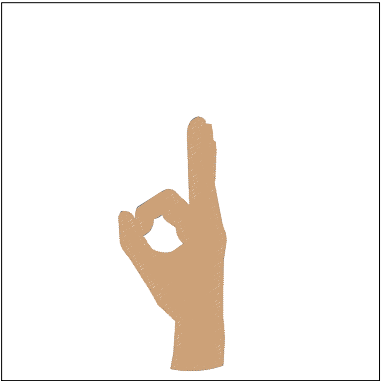
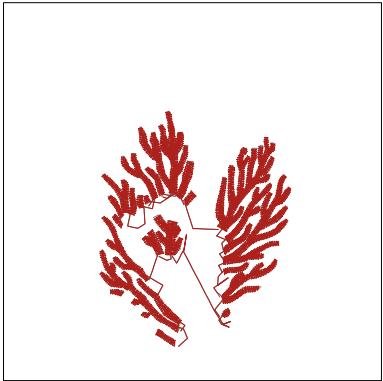
Wilcom EmbroideryStudio - Designing



Stitches: 14,010  
Height: 88.2 mm  
Width: 58.4 mm  
Colors: 5  
Colorway: Madeira Polyneon  
Zoom: 0.54

Design: **n°2df80159548 \_15-29-59\_logo\_1\_HQ**

Title: **n°2df80159548 \_15-29-59\_logo\_1\_HQ**

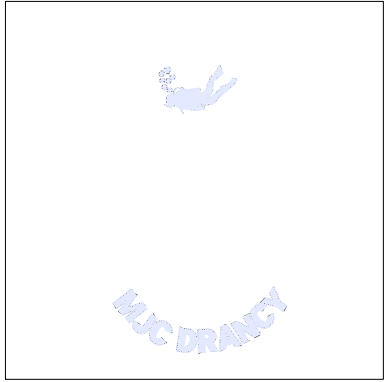


Stop #: 1  
Element:  
Code: 1797  
Name: Hanukkuh Blue  
Chart: Madeira PolyNeon 40  
Stitches: 6,854  
Thread used: 41.11m

Stop #: 2  
Element:  
Code: 1878  
Name: Cinnamon Candy  
Chart: Madeira PolyNeon 40  
Stitches: 3,674  
Thread used: 14.69m

Stop #: 3  
Element:  
Code: 1556  
Name: Taste of Honey  
Chart: Madeira PolyNeon 40  
Stitches: 2,095  
Thread used: 11.89m

Stop #: 4  
Element:  
Code: 1927  
Name: Burly Wood  
Chart: Madeira PolyNeon 40  
Stitches: 118  
Thread used: 0.46m



Stop #: 5  
Element:  
Code: 1801  
Name: Super White  
Chart: Madeira PolyNeon 40  
Stitches: 1,267  
Thread used: 5.26m