

# Production Worksheet

Wilcom EmbroideryStudio - Designing



Design: **n°10300159572\_16-36-21\_SENSOME**

Title: **SP\_DVS\_n**

Stitches: 5,743  
Height: 42.5 mm  
Width: 120.6 mm  
Colors: 6  
Colorway: Madeira Classic  
Zoom: 1:1



# Production Worksheet

Wilcom EmbroideryStudio - Designing



Design: **n°10300159572\_16-36-21\_SENSOME**

Title: **SP\_DVS\_n**

Stitches: 5,743  
 Height: 42.5 mm  
 Width: 120.6 mm  
 Colors: 6  
 Colorway: Madeira Classic  
 Zoom: 1:1

Machine format: Tajima  
 Color changes: 9  
 Stops: 10  
 Trims: 44  
 Appliqués: 0  
 Left: 60.3 mm  
 Right: 60.3 mm  
 Up: 21.2 mm  
 Down: 21.2 mm  
 EndX: 0.0 mm  
 EndY: 0.0 mm  
 Area: 5120.4 mm<sup>2</sup>  
 Max stitch: 11.0 mm  
 Min stitch: 0.1 mm  
 Max jump: 6.9 mm  
 Total thread: 23.83m  
 Total bobbin: 6.72m

Stop Sequence:

#	N#	Color	St.	Code	Name	Chart
1.	4		288	1177	Blue Bird	Madeira Classic 40
2.	17		337	1297	Peacock Blue	Madeira Classic 40
3.	33		369	1295	Cyan	Madeira Classic 40
4.	34		281	1095	Larimar	Madeira Classic 40
5.	18		413	1075	Baby Blue	Madeira Classic 40
6.	17		377	1297	Peacock Blue	Madeira Classic 40
7.	34		285	1095	Larimar	Madeira Classic 40
8.	16		769	1094	Caribbean Blue	Madeira Classic 40
9.	17		963	1297	Peacock Blue	Madeira Classic 40
10.	16		1,659	1094	Caribbean Blue	Madeira Classic 40

**Color Film**

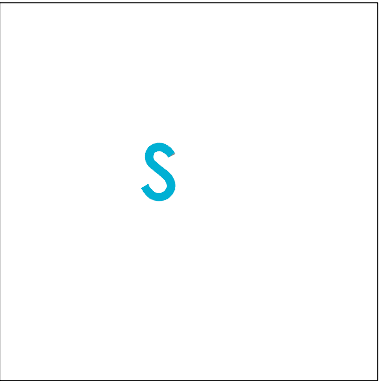
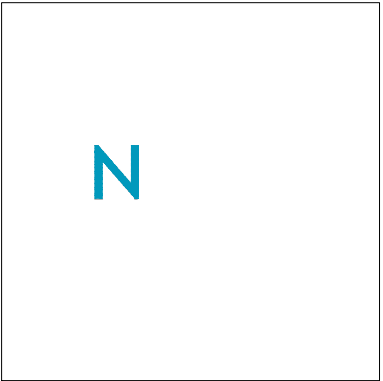
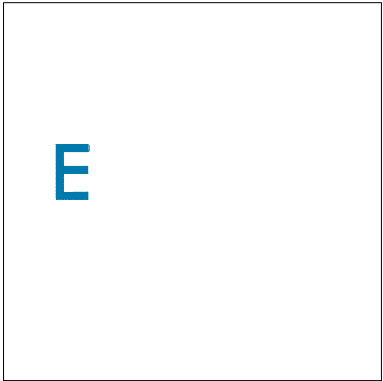
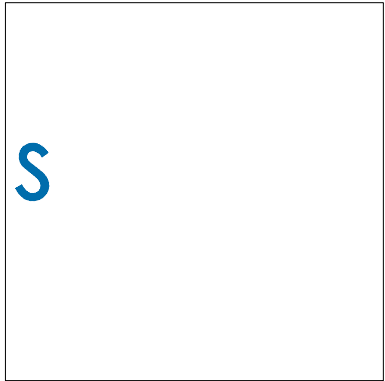
Wilcom EmbroideryStudio - Designing



Design: **n°10300159572\_16-36-21\_SENSOME**

Title: **SP\_DVS\_n**

Stitches: 5,743  
Height: 42.5 mm  
Width: 120.6 mm  
Colors: 6  
Colorway: Madeira Classic  
Zoom: 0.39

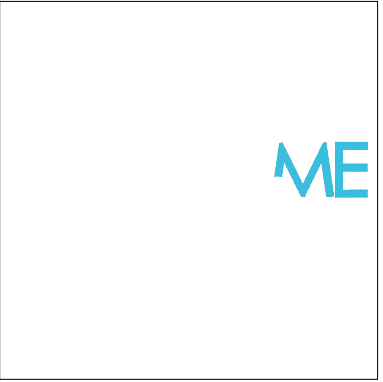
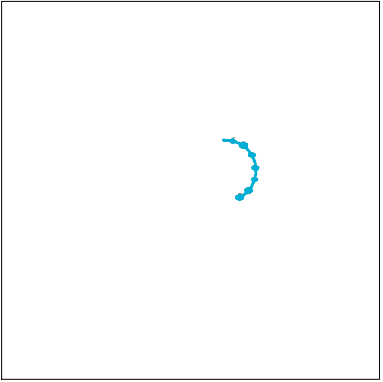
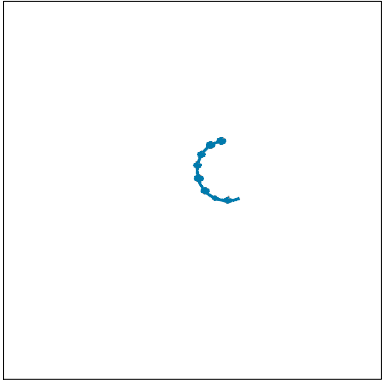
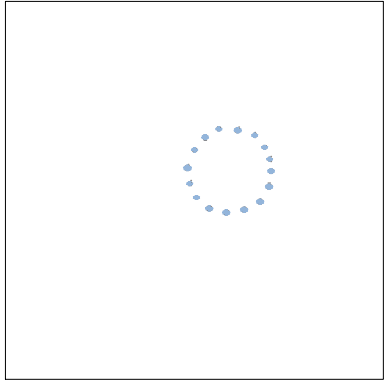


Stop #: 1  
Element:  
Code: 1177  
Name: Blue Bird  
Chart: Madeira Classic 40  
Stitches: 288  
Thread used: 1.44m

Stop #: 2  
Element:  
Code: 1297  
Name: Peacock Blue  
Chart: Madeira Classic 40  
Stitches: 337  
Thread used: 1.71m

Stop #: 3  
Element:  
Code: 1295  
Name: Cyan  
Chart: Madeira Classic 40  
Stitches: 369  
Thread used: 1.87m

Stop #: 4  
Element:  
Code: 1095  
Name: Larimar  
Chart: Madeira Classic 40  
Stitches: 281  
Thread used: 1.43m

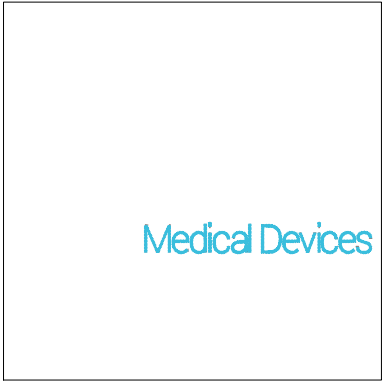


Stop #: 5  
Element:  
Code: 1075  
Name: Baby Blue  
Chart: Madeira Classic 40  
Stitches: 413  
Thread used: 1.39m

Stop #: 6  
Element:  
Code: 1297  
Name: Peacock Blue  
Chart: Madeira Classic 40  
Stitches: 377  
Thread used: 1.29m

Stop #: 7  
Element:  
Code: 1095  
Name: Larimar  
Chart: Madeira Classic 40  
Stitches: 285  
Thread used: 0.98m

Stop #: 8  
Element:  
Code: 1094  
Name: Caribbean Blue  
Chart: Madeira Classic 40  
Stitches: 769  
Thread used: 3.78m



Stop #: 9  
Element:  
Code: 1297  
Name: Peacock Blue  
Chart: Madeira Classic 40  
Stitches: 963  
Thread used: 3.26m

Stop #: 10  
Element:  
Code: 1094  
Name: Caribbean Blue  
Chart: Madeira Classic 40  
Stitches: 1,659  
Thread used: 5.68m