

Production Worksheet

Wilcom EmbroideryStudio - Designing



Stitches: 4,196
 Height: 28.4 mm
 Width: 98.2 mm
 Colors: 3
 Colorway: Isacord 40
 Zoom: 1:1

Design: n°b3200159730 _10-33-55_ BRODERIE SERTEC

Title: n°b3200159730 _10-33-55_ BRODERIE SERTEC

Machine format: Tajima
 Color changes: 4
 Stops: 5
 Trims: 20
 Appliqués: 0
 Left: 49.1 mm
 Right: 49.1 mm
 Up: 14.2 mm
 Down: 14.2 mm
 EndX: 0.0 mm
 EndY: 0.0 mm
 Area: 2790.4 mm²
 Max stitch: 8.8 mm
 Min stitch: 0.2 mm
 Max jump: 7.0 mm
 Total thread: 17.92m
 Total bobbin: 5.35m

Stop Sequence:

| # | N# | Color | St. | Code | Name | Chart |
|----|----|-------|-------|------|-----------|------------|
| 1. | 16 | | 611 | 3543 | Royal | Isacord 40 |
| 2. | 18 | | 607 | 3840 | Ciel | Isacord 40 |
| 3. | 17 | | 497 | 3910 | Turquoise | Isacord 40 |
| 4. | 16 | | 1,070 | 3543 | Royal | Isacord 40 |
| 5. | 18 | | 1,409 | 3840 | Ciel | Isacord 40 |



Color Film

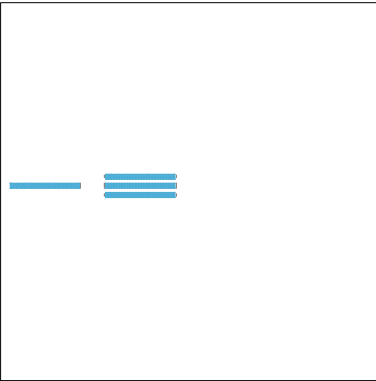
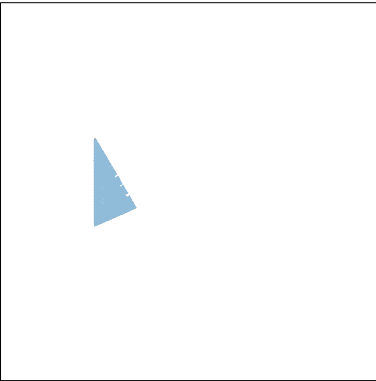
Wilcom EmbroideryStudio - Designing



Stitches: 4,196
Height: 28.4 mm
Width: 98.2 mm
Colors: 3
Colorway: Isacord 40
Zoom: 0.48

Design: **n°b3200159730 _10-33-55_ BRODERIE SERTEC**

Title: **n°b3200159730 _10-33-55_ BRODERIE SERTEC**



Stop #: 1
Element:
Code: 3543
Name: Royal
Chart: Isacord 40
Stitches: 611
Thread used: 2.93m

Stop #: 2
Element:
Code: 3840
Name: Ciel
Chart: Isacord 40
Stitches: 607
Thread used: 2.90m

Stop #: 3
Element:
Code: 3910
Name: Turquoise
Chart: Isacord 40
Stitches: 497
Thread used: 2.03m

Stop #: 4
Element:
Code: 3543
Name: Royal
Chart: Isacord 40
Stitches: 1,070
Thread used: 4.42m



Stop #: 5
Element:
Code: 3840
Name: Ciel
Chart: Isacord 40
Stitches: 1,409
Thread used: 5.13m