

Production Worksheet

Wilcom EmbroideryStudio - Designing



Stitches: 4,214
 Height: 30.6 mm
 Width: 98.2 mm
 Colors: 3
 Colorway: Isacord 40
 Zoom: 1:1

Design: **n°b3200159730 _10-33-55_BRODERIE SERTEC_amend1**

Title: **n°b3200159730 _10-33-55_BRODERIE SERTEC**

Machine format: Tajima
 Color changes: 4
 Stops: 5
 Trims: 20
 Appliqués: 0
 Left: 49.1 mm
 Right: 49.1 mm
 Up: 15.3 mm
 Down: 15.3 mm
 EndX: 0.0 mm
 EndY: 0.0 mm
 Area: 3006.4 mm²
 Max stitch: 8.8 mm
 Min stitch: 0.2 mm
 Max jump: 7.0 mm
 Total thread: 18.00m
 Total bobbin: 5.38m

Stop Sequence:

#	N#	Color	St.	Code	Name	Chart
1.	16		611	3543	Royal	Isacord 40
2.	18		607	3840	Ciel	Isacord 40
3.	17		497	3910	Turquoise	Isacord 40
4.	16		1,070	3543	Royal	Isacord 40
5.	18		1,427	3840	Ciel	Isacord 40



Color Film

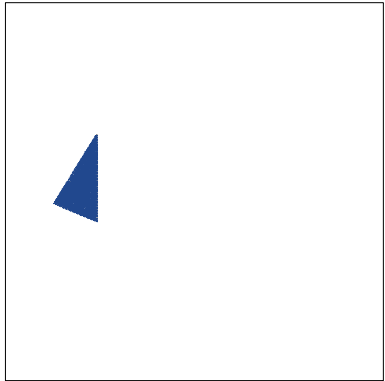
Wilcom EmbroideryStudio - Designing



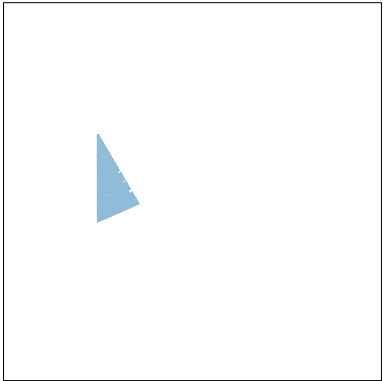
Stitches: 4,214
Height: 30.6 mm
Width: 98.2 mm
Colors: 3
Colorway: Isacord 40
Zoom: 0.48

Design: **n°b3200159730 _10-33-55_BRODERIE SERTEC_amend1**

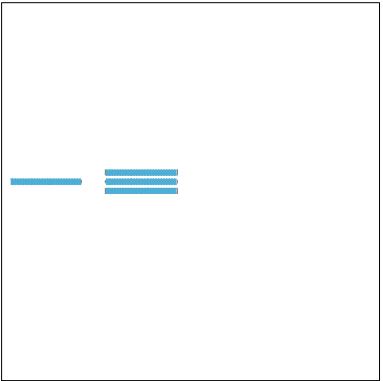
Title: **n°b3200159730 _10-33-55_BRODERIE SERTEC**



Stop #: 1
Element:
Code: 3543
Name: Royal
Chart: Isacord 40
Stitches: 611
Thread used: 2.94m



Stop #: 2
Element:
Code: 3840
Name: Ciel
Chart: Isacord 40
Stitches: 607
Thread used: 2.90m



Stop #: 3
Element:
Code: 3910
Name: Turquoise
Chart: Isacord 40
Stitches: 497
Thread used: 2.03m



Stop #: 4
Element:
Code: 3543
Name: Royal
Chart: Isacord 40
Stitches: 1,070
Thread used: 4.42m



Stop #: 5
Element:
Code: 3840
Name: Ciel
Chart: Isacord 40
Stitches: 1,427
Thread used: 5.21m