

Production Worksheet

Wilcom EmbroideryStudio - Designing



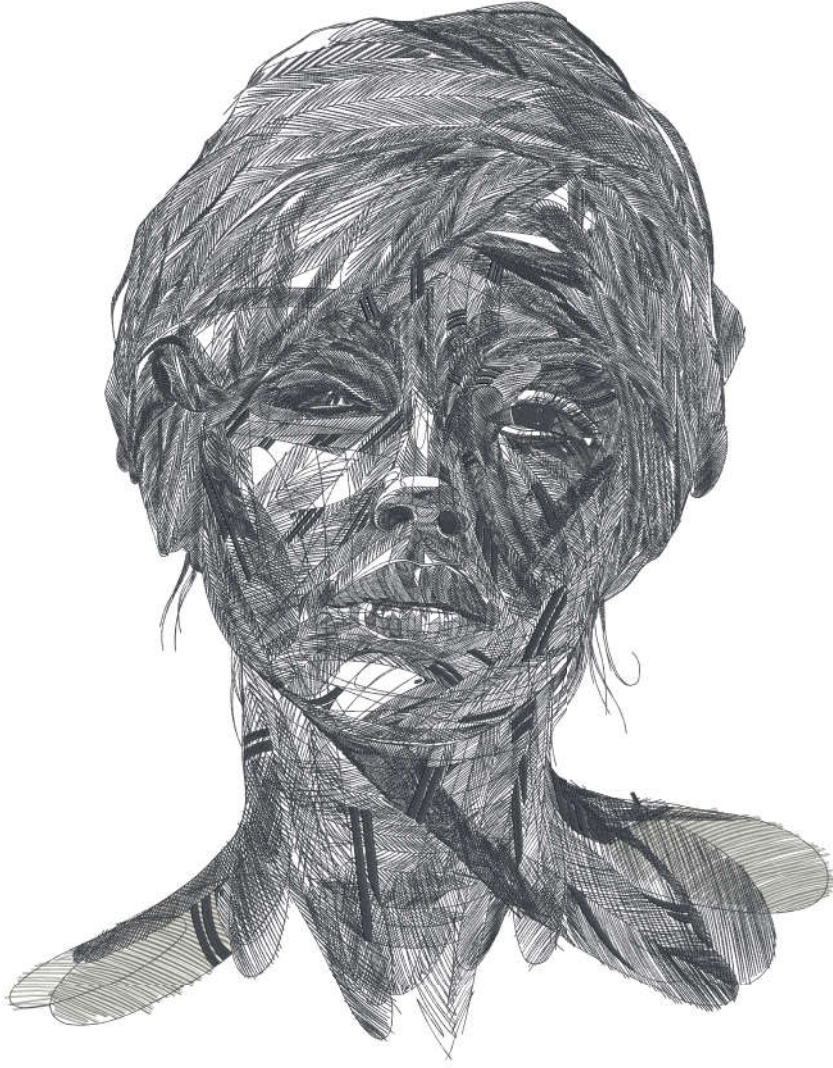
Stitches: 540,138
Height: 700.0 mm
Width: 549.8 mm
Colors: 2
Colorway: Isacord 40
Zoom: 0.20

Design: n°029f0172823 _16-13-54_6EFC05A1-E805-4809-A37F-22926C6E752E
1_amend3
Title: n°029f0172823 _16-13-54_6EFC05A1-E805-4809-A37F-22926C6E752E
1_amend3

Machine format: Tajima
Color changes: 1
Stops: 2
Trims: 11
Appliqués: 0
Left: 274.9 mm
Right: 274.9 mm
Up: 350.0 mm
Down: 350.0 mm
EndX: 0.0 mm
EndY: 0.0 mm
Area: 384854.7 mm²
Max stitch: 6.9 mm
Min stitch: 0.0 mm
Max jump: 6.9 mm
Total thread: 2209.19m
Total bobbin: 668.87m

Stop Sequence:

#	N#	Color	St.	Code	Name	Chart
1.	29		31,957	4332	Rouh Sea	Isacord 40
2.	2		508,179	3574	Darkest Blue	Isacord 40



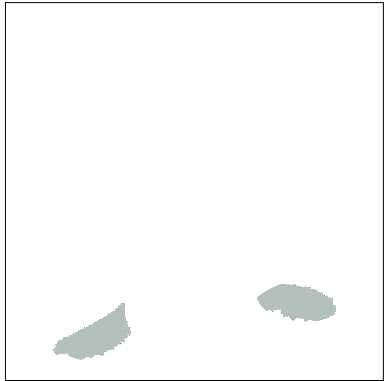
Color Film

Wilcom EmbroideryStudio - Designing



Stitches: 540,138
Height: 700.0 mm
Width: 549.8 mm
Colors: 2
Colorway: Isacord 40
Zoom: 0.07

Design: **n°029f0172823 _16-13-54_6EFC05A1-E805-4809-A37F-22926C6E752E
1_amend3**
Title: **n°029f0172823 _16-13-54_6EFC05A1-E805-4809-A37F-22926C6E752E
1_amend3**



Stop #: 1
Element:
Code: 4332
Name: Rouh Sea
Chart: Isacord 40
Stitches: 31,957
Thread used: 169.86m

Stop #: 2
Element:
Code: 3574
Name: Darkest Blue
Chart: Isacord 40
Stitches: 508,179
Thread used: 2039.12m